



Workforce Alliance

Strategic Plan 2020 – 2022

Project Alignment

Local Workforce Development Board Presentation
July 27, 2022



Workforce Alliance Strategic Plan 2020 – 2022 Project Alignment

Meet or exceed the negotiated performance of WIOA Title I programs to maximize community impact

Enhance youth employment opportunities by expanding partnerships with businesses, schools and other community organizations

Expand the community impact of the Workforce Alliance through higher levels of board member participation

Increase the awareness of workforce programs and services throughout South Central Kansas

Continue to increase non-WIOA funding

Proactively approach the employment and skills training challenges and opportunities of the future with energy and planning today



ROADTRIP NATION



Vets ICT



CHILD START



One Workforce Grant





Workforce Alliance Strategic Plan 2020 – 2022 Project Alignment



ChildStart Partnership Outreach & Awareness

- WA and ChildStart Inc. part of community planning work group led by WSU
- Through grant funds developing targeted outreach strategy on resources available and best practices to support workers and attract employees
- Child Care and Employment Video:

<https://drive.google.com/file/d/1HuP8CGUIB8hHBdzgBjj9y0AGRnQkOllh/view?usp=sharing>



Workforce Alliance
Strategic Plan 2020 – 2022
Project Alignment



Evergy Customer Connect Partnership

- To better serve its customers, and to support the community, Evergy is establishing a Customer Connect Center (CCC) in Wichita to create a face-to-face customer experience and educate customers on a suite of energy efficiency products
- In partnership with Evergy, the (WA) will hire the staff to assist in the operations of the Evergy CCC
- Plan to be Operational by September 2022



Workforce Alliance
Strategic Plan 2020 – 2022
Project Alignment



Evergy Customer Connect Partnership

- Benefits of this Partnership Include:
 - Allowing the WA to create work experiences for youth and adult job seekers
 - Utilizing the Evergy CCC as an access point for employment and training services and leveraging the operations of the Wichita Workforce Center
 - Increasing visibility to employment and career opportunities with Evergy



Workforce Alliance Strategic Plan 2020 – 2022 Project Alignment



Vets ICT

- **Targeted Strategy to Help Connect Veterans, Transitioning Military Personnel and Families to Employment and Career Opportunities in South Central Kansas**
- **WA Received \$705,000 ARPA Grant To Launch Project**
- **Leading Project Partners**
 - Wichita Regional Chamber of Commerce
 - Greater Wichita Partnership
 - Greater Wichita Veterans Advocacy Board



Workforce Alliance Strategic Plan 2020 – 2022 Project Alignment



Vets ICT

- **Initial Action Steps**
 - Naming and Branding of Project
 - Recruiting and Hiring Staff
 - Labor Market Analysis
 - Website Development
 - Small Business OJT Partnerships



Workforce Alliance Strategic Plan 2020 – 2022 Project Alignment

Youth Employment Project / Helping Youth Prepare for Employment / Work-Based Learning

- **Manufacturing Internships**
 - Cox Machine - 10
 - Spirit AeroSystems - 36
 - Textron Aviation – 152





Workforce Alliance Strategic Plan 2020 – 2022 Project Alignment

Youth Employment Project / Helping Youth Prepare for Employment / Work-Based Learning

- **Camp HYPE**

- Health Care Camp - Ascension Via Christi
- Technology Camp - Flagship Kansas
- Spirit AeroSystems Camp
- Trade Skills Camp – IBEW /Plumbers & Pipefitters / Sheet Metal Workers
- Textron Aviation Camp
- General Careers – (United Way Funding)





Workforce Alliance Strategic Plan 2020 – 2022 Project Alignment

Youth Employment Project / Helping Youth Prepare for Employment / Work-Based Learning

- **State Funding to Support Two Full-Time Work-Based Learning Intermediary Positions**
 - USD 511 - Chaparral High School
 - USD 375 - Circle High School
 - USD 264 - Clearwater High School
 - USD 260 - Derby High School
 - USD 490 - El Dorado High School
 - USD 266 - Maize High School/Maize Academy
 - USD 259 - Wichita Public Schools
 - USD 353 - Wellington High School





Workforce Alliance Strategic Plan 2020 – 2022 Project Alignment



**ROADTRIP
NATION**

SOUTH CENTRAL KANSAS ROADTRIP

Fueled By:





Workforce Alliance Strategic Plan 2020 – 2022 Project Alignment



ROADTRIP NATION

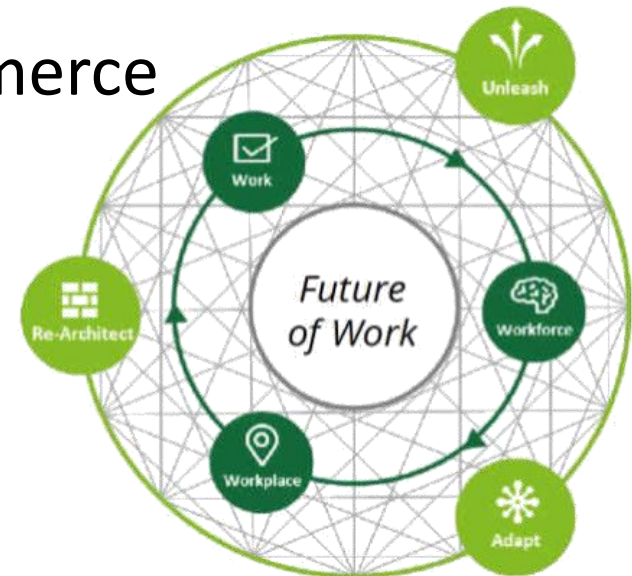
- **Phase 1 Update:**
 - Project Launch August 1, 1 pm, at Wichita Workforce Center
 - Build Your Future | Wichita [Build Your Future | Wichita \(roadtripnation.com\)](https://www.roadtripnation.com/wichita)
- **Phase 2 Update:**
 - Filming Documentary Early November
 - Accepting Applications for Road Trippers Through August 14
 - South Central Kansas Roadtrip - Roadtrip Nation Applications [South Central Kansas Roadtrip Apply](https://www.roadtripnation.com/south-central-kansas-roadtrip-apply)



Workforce Alliance Strategic Plan 2020 – 2022 Project Alignment

One Workforce Grant & Deloitte Future of Work

- **WA Partner in Talent Roadmap Project led by Greater Wichita Partnership and Facilitated by Deloitte**
 - Kansas Department of Commerce
 - Sedgwick County
 - City of Wichita
- **Role of Workforce Alliance**
 - Business & Education Feedback Loop



One Workforce Grant

BUSINESS AND EDUCATION FEEDBACK LOOP

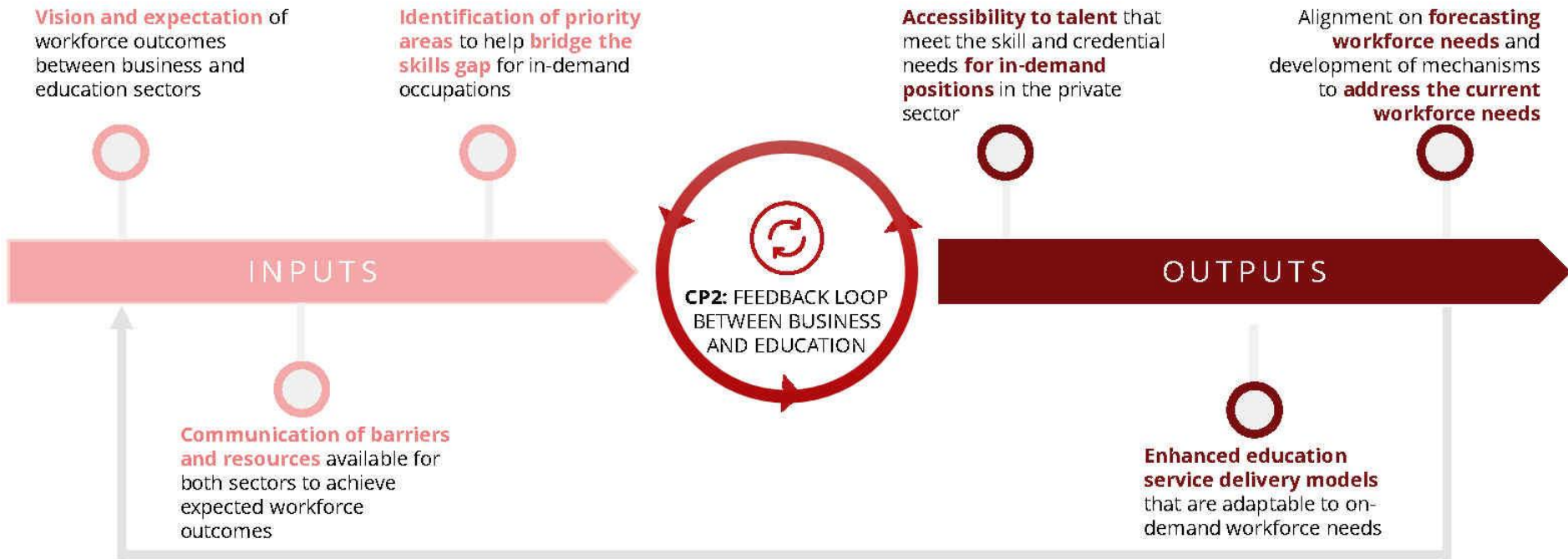
In order to prepare Wichita's workforce to meet the evolving needs of the business sector, it is necessary to ensure strategic alignment between the business sector and the education / workforce planning sector.

The Integrated Feedback Loop **will enable:**

- Greater awareness of key business / industry strategies that will impact the skills and capabilities needs of the workforce
- The ability to develop targeted and aligned strategies to upskill Wichita's workforce to meet the evolving workforce demands
- Drive progress towards enhancing the current infrastructure for talent development across the region

Inputs and outputs of established feedback loop

As representatives from the private and business sectors work together to provide their input on priority areas and challenges, their output will help to drive progress towards achieving success in addressing workforce needs



To successfully address the workforce needs aligned on by employers and educators, stakeholders should also prioritize implementing **CP3: Develop strategic model for engagement with private employers to incentivize creation of professional development and training pathways that connect talent to employers**



Workforce Alliance Strategic Plan 2020 – 2022 Project Alignment

Meet or exceed the negotiated performance of WIOA Title I programs to maximize community impact	Enhance youth employment opportunities by expanding partnerships with businesses, schools and other community organizations	Expand the community impact of the Workforce Alliance through higher levels of board member participation	Increase the awareness of workforce programs and services throughout South Central Kansas	Continue to increase non-WIOA funding	Proactively approach the employment and skills training challenges and opportunities of the future with energy and planning today
Childcare Outreach & Awareness	Evergy Customer Connect Partnership	Childcare Outreach & Awareness	Childcare Outreach & Awareness	Evergy Customer Connect Partnership	Childcare Outreach & Awareness
Evergy Customer Connect Partnership	Roadtrip Nation –Project Wichita	Evergy Customer Connect Partnership	Evergy Customer Connect Partnership	One Workforce Grant/Deloitte Future of Work	Roadtrip Nation –Project Wichita
Roadtrip Nation –Project Wichita	YEP/HYPE & Work-Based Learning	One Workforce Grant/Deloitte Future of Work	One Workforce Grant/Deloitte Future of Work	Roadtrip Nation –Project Wichita	Vets ICT Project
YEP/HYPE & Work-Based Learning		Roadtrip Nation –Project Wichita	Vets ICT Project	Vets ICT Project	YEP/HYPE & Work-Based Learning
		Vets ICT Project	YEP/HYPE & Work-Based Learning	YEP/HYPE & Work-Based Learning	
		YEP/HYPE & Work-Based Learning			



Workforce Alliance
Strategic Plan 2020 – 2022
Project Alignment

2023 - 2025

**Workforce Alliance Strategic Planning to
begin in October and be completed by
January**

More to Come !!!